

Typical Performance

FEATURES

- 2:1 Wide Input Range, isolation, Regulated Output,3W
- I/O Isolation : 1000VDC,3000VDC
- Efficiency :up to 80%
- Short circuit protection(automatic recovery)
- Working temperature -40°C~+85°C
- MTBF≥10×10⁵Hrs
- In line with RoHS COMPLIANT
- Postive voltage accuracy:±1%(typ)
- Negative voltage accuracy:±3%(typ)
- Line regulation (Vin from low to high): ±0.2%(typ)
- Load regulation (10%-100% load) :±0.5%
- Ripple&noise(20MHz Band width) <100mVp-p
- Temperature drift(100% full load):±0.03%/°C (max)
- Switching Frequency(Full load,nominal input):300Khz(PFM)
- Storage Temperature:-55°C~+125°C
- Isolation Resistance:1000MΩ/1min
- Cooling:Free aire convection



3-Years Product Warranty

WW	3	XX	S/D	XX	S/S3
①	②	③	④	⑤	⑥

- ①Series name
- ②Output watt
- ③Normal input voltage
- ④S:Single output
D: Dual output
- ⑤Output voltage
- ⑥I/O isolation(S:1KV,no S:1.5KV,S3:3KV)

Product Program

Part #	Input voltage range	Nominal output voltage / output current						Efficiency (%. typ)
		VO1			VO2			
		Voltage (VDC)	Min (mA)	Max (mA)	Voltage (VDC)	Min (mA)	Max (mA)	
WW3-05S05	12V (9~18VDC)	5	60	600				
WW3-05S09		9	33	333				
WW3-05S12		12	25	250				
WW3-05S15		15	20	200				
WW3-05S24		24	12	125				
WW3-05D09		+9	16	166	-9	16	166	
WW3-05D12		+12	12	125	-12	12	125	
WW3-05D15		+15	10	100	-15	10	100	
WW3-05D24		+24	6	62	-24	6	62	
WW3-12S05	12V(9~18VDC)	5	60	600				

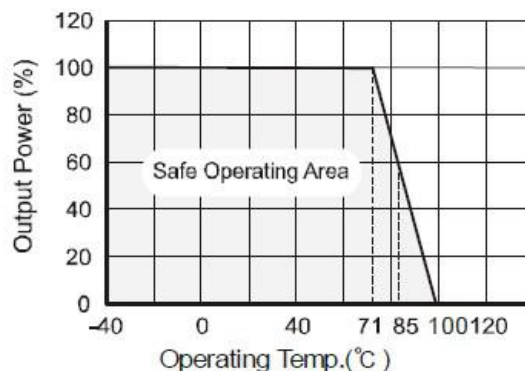
WW3-12S09		9	33	333				
WW3-12S12		12	25	250				
WW3-12S15		15	20	200				
WW3-12S24		24	12	125				
WW3-12D09		+9	16	166	-9	16	166	
WW3-12D12		+12	12	125	-12	12	125	
WW3-12D15		+15	10	100	-15	10	100	
WW3-12D24		+24	6	62	-24	6	62	
WW3-24S05	24V (18~36VDC)	5	60	600				
WW3-24S09		9	33	333				
WW3-24S12		12	25	250				
WW3-24S15		15	20	200				
WW3-24S24		24	12	125				
WW3-24D09		+9	16	166	-9	16	166	
WW3-24D12		+12	12	125	-12	12	125	
WW3-24D15		+15	10	100	-15	10	100	
WW3-24D24	+24	6	62	-24	6	62		
WW3-48S09	48V (36~72VDC)	9	33	333				
WW3-48S12		12	25	250				
WW3-48S15		15	20	200				
WW3-48S24		24	12	125				
WW3-48D09		+9	16	166	-9	16	166	
WW3-48D12		+12	12	125	-12	12	125	
WW3-48D15		+15	10	100	-15	10	100	
WW3-48D24		+24	6	62	-24	6	62	

□ Shows the nominal value of input voltage, due to space limitations, the above list is only for some products, if other than a list of products, please contact the Company's sales department.

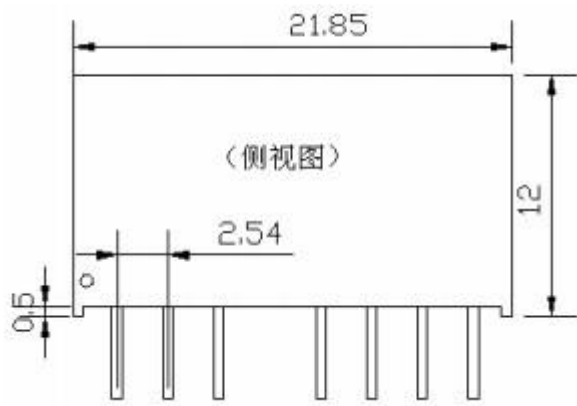
Mechanical Data

Packing Code	L x W x H : mm	Packing No.
A	22.00 x 9.5 x 12	

Typical Temperature Curve



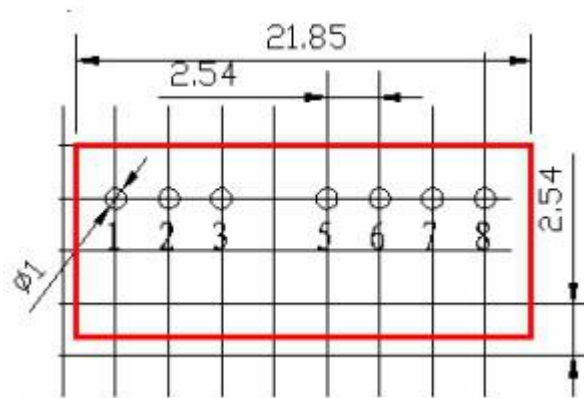
Mechanical Dimension



LATERAL VIEW



BOTTOM VIEW



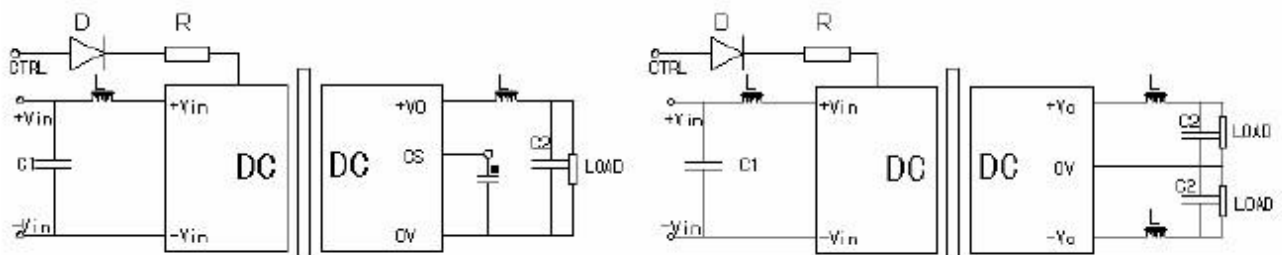
Recommended PCB Layout

UNIT:mm

Pin Assignment

PIN	1	2	3	5	6	7	8			
S	GND	Vin	CTRL	NC	+Vo	0V	CS			
D	GND	Vin	CTRL	NC	+Vo	0V	-Vo			

Recommend Circuit



C1、C2 select

Single O/P	C1	Dual O/P	C2
5VDC	1000uF	±5 VDC	680uF
9VDC	680uF	±9 VDC	470uF
12VDC	470uF	±12 VDC	330uF

15VDC	330uF	±15 VDC	220uF
---	---	---	---

Application Note

1. The load shouldn't be over the max load and shouldn't be less than 10%, otherwise the ripple will increase dramatically, then they may not meet all specifications listed.
2. To be more reliable, if your circuit load power demand is smaller, please connect an appropriate resistor to increase Load in following output.
3. This product doesn't support hot-swappable, can't be used in parallel.

*Note: The power modules such as the definition of the pin does not match with the hand book, please refer to the actual item.